

C . I . A .

NEWSLETTER

Hazelwood
School
District

"A Culture of High Expectations and Excellence!"

Dr. Erik Melton,
*Assistant Superintendent for
Instruction*

**Happy
November!**



This [link](#) takes you to the celebrations! I urge everyone to look at their data. As promised, I want to give kudos to the schools that outperformed the rest and set up a way to also give kudos to those that had the most growth.

By the time you read this, we have completed our first quarter of school and we have multiple data points on our students. I'd like to remind everyone that instruction is key; however we must also assess whether or not our students learned what was intended through that instruction. It's a necessary cycle and both parts must be taken seriously in order for our students to achieve their goals. I urge everyone to utilize the knowledge gained from our assessment data to drive our next steps for instructional planning. Know your standards, the level in which they must be taught, and where they are in the pacing guide. Please don't forget to reach out to your colleagues for support or advice based on their successes.

Important CIA Resources and Links

- [Curriculum, Instruction, and Assessment Helpful Documents](#)
- [Curriculum Department Go To's](#)
- [Assessment Calendar](#)
- [NWEA MAP Reading Fluency](#)

The CIA Department has created a website for teachers to easily find curriculum materials.

[Click here for access.](#)



Dr. Patty Ulrich
Director of Curriculum

Ever used [ChatGPT](#) or [Gemini](#)? AI tools are becoming increasingly useful in education, particular for teacher planning. Accessing the right AI tools for planning could save you hours of time. Below are links to free AI for Educators and their uses:

[Inkwire](#)- Planning for Project Based Learning

[Brisk](#)- Generates feedback for students; creates presentations; turns Youtube videos into Google Slides; lesson planning; text leveler

[Khanmigo](#)- Almost any tool you need to lesson plan including differentiation tools

[Diffit](#)- Upload a resource and it will provide a lesson plan and activities for you to use

It is important to remember that while AI is a useful tool and a game changer, it does have its flaws. Keep in mind and assess for these challenges when using AI:

- Bias
- Hallucination (a response generated by AI that contains false or misleading information presented as fact)
- Confidence
- Over-reliance
- Self-modeling
- Privacy
- Data security

For quick reads on the advances and challenges of AI and ways to effectively use AI in education subscribe for free to oneusefulthing.org.

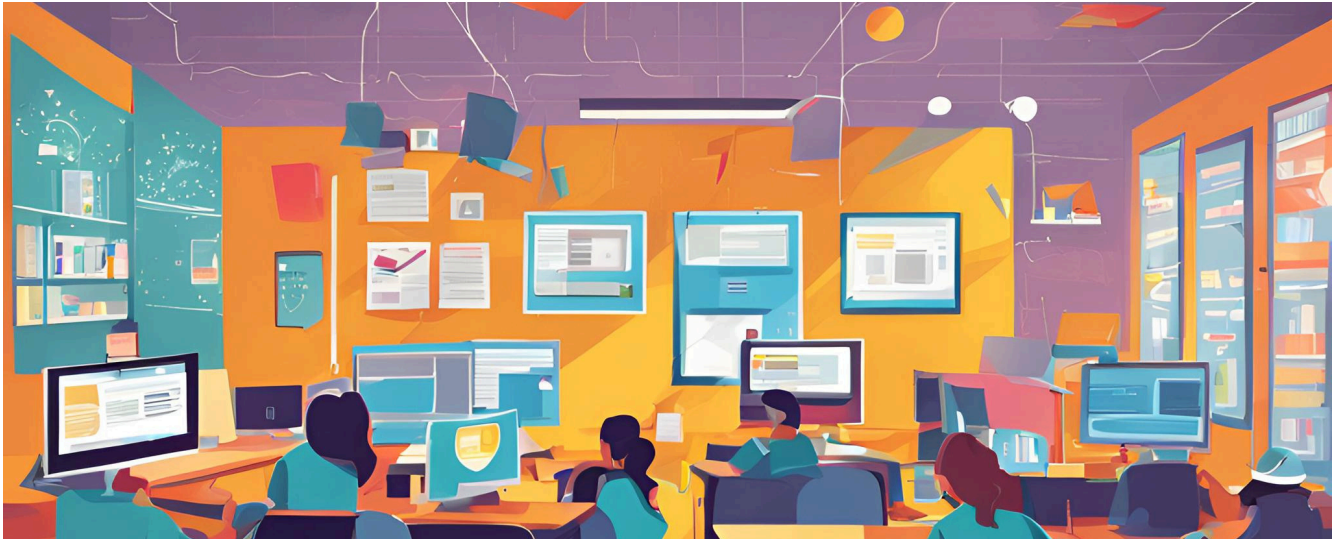


John Kitchens
Director of Assessment

With the NWEA MAP Growth test windows wrapping up, I have received many requests for access to specific student assessment data. Our systems are limited in their ability to allow access to specific students for individuals who are not the teacher of record. We understand the need for assessment data to meet the needs of our students, but there are additional considerations for student privacy. In these situations, retrieving the data on specific students from the teacher or building leaders is the best way to share data while adhering to FERPA requirements.

The test window is open for MAP-A Fall 2024 Required Instructionally Embedded testing window and is to be completed by Dec 13, 2024
Upcoming test windows: ELO (Nov 1 - 26); NWEA MAP Reading Fluency (Dec 2-18); NWEA MAP Growth (Dec 2-18)

COORDINATORS' CORNER



Dr. Sherry Jordan, ELA Curriculum Coordinator

November PD is centered around our district ELA goal areas and focusing instruction around these literacy goals. I encourage you to use the ELA toolkits and resources our team will be sharing with you and to be intentional in teaching the standards of focus in the coming months to improve student success in the goal areas including RF4A, RIA, and WIA across our district. Use the Progression of Standards Documents ([Elementary](#) and [Secondary](#)) to ensure you are teaching the standards on grade level and use small group time to scaffold instruction.

[Click here to read our shout outs and get ELA Google Classroom info...](#)

Dr. Nevels Nevels, Math Curriculum Coordinator

Think of a number, double it, add six, divide it in half, and subtract the number you started with.

The answer is three.

Why?

[Click here to learn more about the Algebraic solution...](#)



Dr. Matt McClellan, CTE Curriculum Coordinator

This is from a Culinary 1 class, in which students can earn the ServSafe Food Handler certification which allows them to work in any kind of establishment that serves food. These students planned and prepared chicken fajitas. In the process of creating their dish from scratch, the students applied multiple ServSafe principles including cleaning, sanitation, prevention of cross contamination, and appropriate cooking temperatures for food.



COORDINATORS' CORNER



Dr. Christina Hughes, Science Curriculum Coordinator

The egg drop lab activity in the Amplify Science curriculum is a fun and engaging way for students to learn about force, motion, and engineering design. In this activity, students are challenged to design and build a protective container for an egg that will prevent it from breaking when dropped from a specified height.

[Click here to read about the experiment and see students at work!](#)

Brenna Mills, Instructional Technology Coordinator

NotebookLM is a new, experimental AI resource from Google that helps users organize information, search across multiple files, and refine ideas.

We have been testing this platform to house our "Ask Hazel" program. "Ask Hazel" may be able to help you answer many of your tech questions in real time. As always, this is a work in progress, so we look forward to your feedback!

[Click here to test out the "Ask Hazel - Infinite Campus" Notebook...](#)



Jolie Kwedar, Instructional Technology Coordinator

We understand that navigating Mastery Connect can sometimes be challenging, and we're here to support you. Whether you're facing tracker issues, questions about data, or need tips for navigating the platform's features- don't worry, we've got you!

There are 5 common issues we encounter and tips to help find a solution.

[Click here to see the big 5 for Mastery Connect...](#)

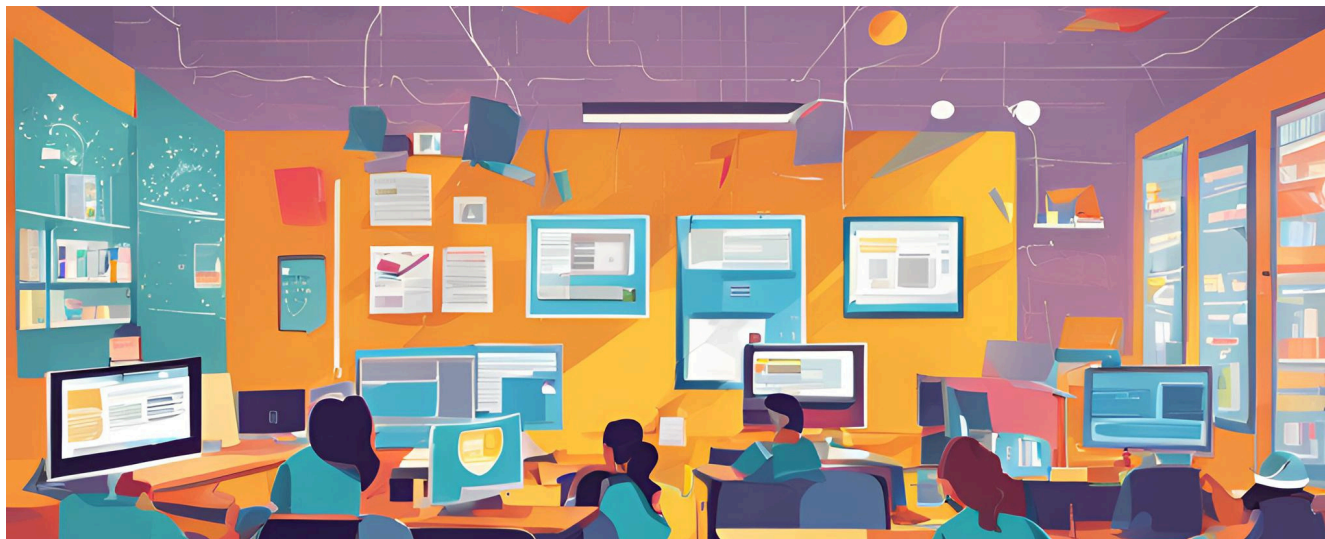


Colleen Beckerle, Social Studies, PE, and Fine Art Curriculum Coordinator

Exciting News! This year, one of our talented GALACTIC teachers, Amanda Davison, has partnered with WORLD MUSIC, LLC to bring the rich diversity of global music right into our classrooms! Each month, students are immersed in new musical traditions from around the world through vibrant displays that feature unique instruments, cultural artifacts, and audio recordings. This partnership not only celebrates different cultures but also enhances students' understanding and appreciation of music as a universal language. We're thrilled to see our students connect, explore, and engage with the world through these monthly music displays!



COORDINATORS' CORNER



KeOnna Reynolds, Virtual Learning Coordinator

Virtual Tip of the month

Encourage autonomy and engagement by making decisions that:

- Set up different learning pathways. Is it helpful to watch a video to give students background knowledge before they start reading? Or do they want to read first and then watch the video?
- Parental involvement and family time is instrumental in the development of a child. Try these fun family night activities at home.

[Click here for *Easy Family Crafts for November*](#)



Dr. Melanie Bloom, Gifted Education Coordinator

Do you have students outperforming their peers whom you think might be gifted? Each elementary school has a gifted specialist assigned for identification and testing. Please share the students names with this staff member. Our process for identification is described in detail here: [GALACTIC Overview / GALACTIC Screening Procedures](#)

The gifted department also handles the acceleration process. A student does not need to be gifted to be referred. A comprehensive evaluation is initiated for students who are performing several grade levels above their peers in at least one subject area. We evaluate the students' performance levels and collect many different types of data (social, emotional, physical, academic, and intellectual development) and assessments in ability, achievement and aptitude. A team decision is then made to determine if a child can advance to the next grade for subjects or a full grade. To initiate this process, please contact the Acceleration Coordinator, Ms. Cymonda Larry: clarry@hazelwoodschoools.org or 314-953-4951. Students should not be moved up a grade for subjects or whole-grade unless this process has been completed.

COACHES' CORNER



Aliana Coleman, World Languages Coach

I wanted to highlight a valuable digital resource for fostering literacy development: *Unite for Literacy*. This comprehensive platform offers a vast collection of library books accessible on a user-friendly digital platform.

Key Features:

- **Diverse Subject Matter:** The platform caters to a wide range of interests, encompassing topics such as animals, people, celebrations, community, family, and more. Learners can explore various subjects, stimulating their curiosity and fostering a love of reading.
- **Multilingual Accessibility:** While the written content remains in English, the platform offers the option to narrate the books in a second language. This feature expands the platform's reach to a broader audience and supports multilingual learners.
- **Link Sharing:** The platform allows users to share links to specific books, facilitating collaboration and promoting book recommendations among learners and educators.

Unite for Literacy represents a valuable free resource for educators, parents, and learners of all ages. By leveraging its diverse content and accessibility features, this platform can significantly enhance the literacy development journey.

<https://www.uniteforliteracy.com/>



Sarah Berghoff, Science Curriculum Coach

Did you know that if you are PLTW Launch Teacher trained you can teach science using the Project Lead the Way curriculum?

Are you interested in being trained?

You can still be trained!

Click [here](#) to let us know you are interested in signing up for training!

There are several elementary teachers in Hazelwood who are using PLTW this school year. Take a look at what their students are learning!

[Click here to read some of the highlights from the science department!](#)



LaShonda Mackey, Math Curriculum Coach

I want to share a free resource that I personally love and have used with my students in the past. This resource requires virtually no preparation time. Open Middle is a website that provides great quick tasks for students to work through. The founders of Open Middle gave the following description on why they chose the name.

Most of the problems on this site have:

- a "closed beginning" meaning that they all start with the same initial problem.
- a "closed end" meaning that they all end with the same answer.
- an "open middle" meaning that there are multiple ways to approach and ultimately solve the problem.

Open middle problems generally require a higher Depth of Knowledge than most problems that assess procedural and conceptual understanding. Some additional characteristics of open middle problems include:

- They generally have multiple ways of solving them as opposed to a problem where you are told to solve it using a specific method.
- They may involve optimization such that it is easy to get an answer but more challenging to get the best or optimal answer.
- They may appear to be simple and procedural in nature but turn out to be more challenging and complex when you start to solve it.
- They are generally not as complex as a performance task which may require significant background context to complete.

To access Open Middle questions, please visit their website.

<https://www.openmiddle.com/>

COACHES' CORNER



Keyonnia Foote
ELA Elementary
Curriculum Coach

Coming soon!



Julie Szczuka
Lead Reading Teacher

Reading Challenges

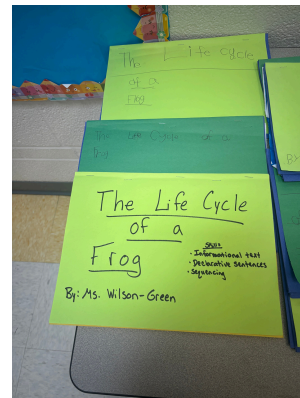
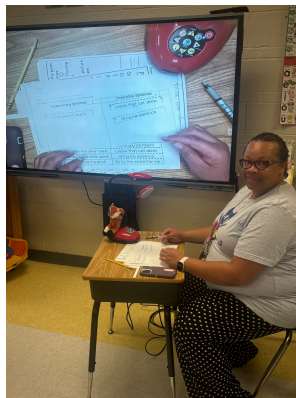
Congratulations to all of our #HSDReads Summer 2024 Participants! Our goal was to read 500,000 minutes collectively over the summer. While we didn't quite reach our goal, we read an impressive 295,402 minutes! The students and staff who participated have been so excited to receive recognition for their efforts, earning certificates, free books, and coupons from community favorites like Canes, Panda Express, Mobile on the Run, and Quick Trip. Click [HERE](#) to watch a short video from some of our #HSDReads celebrations.

Although the #HSDReads Summer Reading Challenge has wrapped up, I am already looking forward to our next challenge during winter break to keep the love of reading and literacy going strong! Be on the lookout for more information to come soon! In the meantime, be sure to introduce your students to logging their minutes in Beanstack. For more information on how to access or use the Beanstack app, click [HERE](#) or feel free to reach out to me.



Brittney Reynold-Turmond
ELA Elementary
Curriculum Coach

I want to recognize Ms. Steffanie Wilson-Green, first grade teacher at Lusher Elementary School, for her dedication to ensuring that her students' succeed. She creates a warm classroom environment where scholars are encouraged, challenged, and excited to learn. Through her small group instruction and creative writing activities, Mrs. Wilson-Green makes learning fun for all. Thanks for building a strong foundation for students.



COACHES' CORNER



Dr. Tamara Walker,
Secondary ELA
Curriculum Coach

Writing isn't just for the classroom!

"We're taking a tour of the school," Mr. Schaffer said. "Grab your notebook, and a writing utensil. Leave everything else behind. You are not to talk. You're simply to observe. Use your senses. Look, listen, smell, touch. And taste, if you're brave. Take notes of what you experience, but do not talk. When we get back to the classroom, I'll tell you why we're doing this."

This excerpt from Rob Montgomery's book, *A Place to Write: Getting Your Students out of the Classroom and into the World* speaks to the significance of place-based writing. This is a type of transformational instruction that lends itself to scholars writing outside of the traditional classroom setting. Writing instruction can be daunting and at times difficult especially as it relates to stimulating students' creative juices. Teachers can offer transformative writing opportunities by moving students out of the classroom to write in real-world spaces. Of course, there will be a need for intentional teacher pre-work such as the necessary organizational structures and student expectations. Moreover, what a great way to offer a rich writing experience for our scholars!

Dr. Nana Becoat's (WHS) Creative Writing Scholars experienced place-based writing at our very own Missouri Botanical Gardens. Dr. Becoat provided her students with a plethora of #writeout activities curated from *The Gateway Writing Project* to, "Let Nature Inspire You to Pause and Write".

"I didn't know I needed this." This reflects the shared experience of Dr. Becoat's Creative Writing scholars—a sentiment that resonated repeatedly throughout this rich writing experience.

Writing is a mode of expression. A break away from the four walls of the classroom is a great way to stimulate student writing!

Place-based writing can include but is not limited to:

- school locations
- natural places
- virtual places
- public places

While placed-based writing may signify the need to schedule a field trip, consider going right outside of the classroom doors. Teachers can curate places inside or just right outside of the school building such as the courtyard, grassy areas outside, cafeteria, library, band room and more. Think outside of the box and welcome student suggestions about other small-scale learning places to write outside of the classroom.

Place based writing can be the springboard for creative writing activities, informational, argument, narrative and even research based writing.

Additional Information

The Hazelwood School District Curriculum, Instruction, and Assessment Department is offering a series of Professional Development dates that are designed to help Elementary and Secondary Math teachers with various strategies. Teachers are paid for their time and food is provided. Please look for the description within KickUp.

After School Math Professional Development Dates:

10/7/2024 - 7th - 12th grades
10/14/2024 - K - 6th grades
10/21/2024 - K - 6th grades
10/29/2024 - 7th - 12th grades
11/4/2024 - 7th - 12th grades
11/11/2024 - K - 6th grades
11/18/2024 - 7th - 12th grades
11/20/2024 - K - 6th grades
12/2/2024 - 7th - 12th grades
12/4/2024 - K - 6th grades
12/11/2024 - 7th - 12th grades
12/16/2024 - K - 6th grades

2024 November Assessment Calendar

Sunday	Monday	Tuesday	Wednesday	Thursday	Friday	Saturday
					1	2
3	4	5	6	7	8	9
	State Assessment Practice Test (4-5 questions) - MasteryConnect - 3rd-8th, all E.O.C. Courses ELO - 3rd - 8th grade (ELA and MA), 5th and 8th grade (Science).					
10	11	12	13	14	15	16
	State Assessment Practice Test (4-5 questions) - MasteryConnect - 3rd-8th, all E.O.C. Courses ELO - 3rd - 8th grade (ELA and MA), 5th and 8th grade (Science).					
17	18	19	20	21	22	23
	State Assessment Practice Test (4-5 questions) - MasteryConnect - 3rd-8th, all E.O.C. Courses ELO - 3rd - 8th grade (ELA and MA), 5th and 8th grade (Science).					
24	25	26	27	28	29	30
			EOC Window Open - Early Grad			
	State Assessment Practice Test (4-5 questions) - MasteryConnect - 3rd-8th, all E.O.C. Courses ELO - 3rd - 8th grade (ELA and MA), 5th and 8th grade (Science).					

2024

December

Assessment Calendar

Sunday	Monday	Tuesday	Wednesday	Thursday	Friday	Saturday
1	2	3	4	5	6	7
	Reading Success and Dyslexia Screener – KG (optional), 1st – 3rd (required), 4th – 5th (required for students with reading plans)					
	NWEA MAP Growth – 1st – 12th Math and ELA, 5th and 8th Science					
8	9	10	11	12	13	14
	Reading Success and Dyslexia Screener – KG (optional), 1st – 3rd (required), 4th – 5th (required for students with reading plans)					
	NWEA MAP Growth – 1st – 12th Math and ELA, 5th and 8th Science					
15	16	17	18	19	20	21
	Reading Success and Dyslexia Screener					
	NWEA MAP Growth – 1st – 12th Math and ELA, 5th and 8th Science					

